



COMMUNITY GRANTS

2022

From supporting schools and wetlands, to sowing community gardens and fostering wellbeing, OneFortyOne is helping grow vibrant communities, one project at a time.



We are deeply connected to the regions where we operate. We value the support of local people and communities, and want to play an active, meaningful role in the areas in which we live and work.

The OneFortyOne Community Grants program launched in July 2021 to support the sustainability and prosperity of our local regions. Our aim is to help grow vibrant communities and protect our shared environment by funding local projects that focus on People, Ideas, Nature, and Education (PINE).

Throughout 2022, we offered grants of up to \$5,000 to community groups in Australia's Green Triangle region and the Nelson, Tasman and Marlborough regions of New Zealand's South Island.

We received some exceptional proposals and were pleased to support them with total funding of over \$200,000. In addition to funding grants, OneFortyOne provided materials for projects including a basketball viewing platform, a netball shelter,

timber decking, and outdoor furniture. OneFortyOne also provides materials to local men's sheds.

To apply for funding, applicants provide information about their community group, their proposal, and how their initiative meets the PINE objectives. We also ask for information about the long-term viability of projects and their positive social impacts. The overarching philosophy of the Community Grants program is that individual communities are best placed to know what they need, so as long as a proposed project fits within the PINE objectives, it is eligible.

Grant applications were submitted via an online application portal, which we developed to promote transparency, fairness, and equal access to funding. The portal also provides information about the types of projects we support and explains the PINE objectives. Most importantly, according to feedback from users, it makes applying for funding easy and accessible.

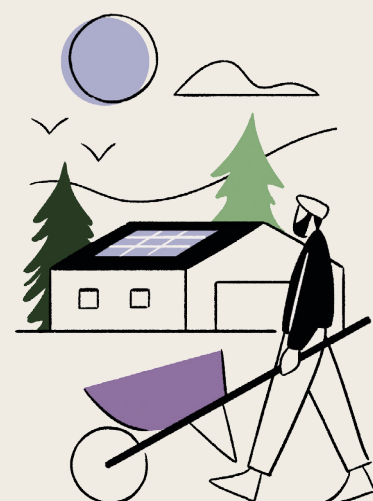
POSITIVE LOCAL AND GLOBAL IMPACTS

Throughout the year, the Community Grants program provided numerous benefits for our business, and the regions in which we work and beyond.

Our PINE program helps us to develop and deepen our relationships with local communities. We are excited that we have this opportunity to help grow a better tomorrow by supporting the things that matter.

Feedback from our People Team tells us that the Community Grants program is highly valued by current and potential employees, and strongly supports us in our drive to recruit top talent. Of course, the grants program also helps us feel good about what we do.

More broadly, in supporting community projects, we helped work towards achieving 6 of the United Nations Sustainable Development Goals (SDGs): Zero Hunger, Good Health & Well-Being, Quality Education, Sustainable Cities & Communities, Life Below Water and Life on Land.

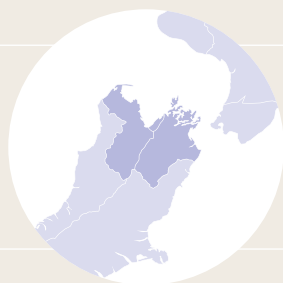
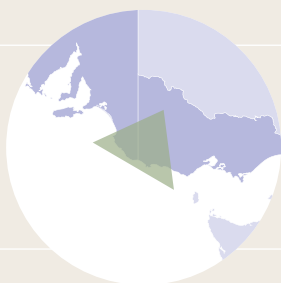


ZERO HUNGER

Organisation	Region	Project	Amount
Foodbank	Green Triangle, AU	Laptop and printer purchase	\$4,700
Mount Gambier Community Christmas Lunch	Green Triangle, AU	Christmas lunch	\$1,000
Meals on Wheels Mount Gambier	Green Triangle, AU	Christmas hampers	\$500

GOOD HEALTH & WELL-BEING

Organisation	Region	Project	Amount
Naracoorte Horse Trials	Green Triangle, AU	Horse trials event	\$2,000
Mid South East Netball	Green Triangle, AU	Umpire clinics and country championship	\$750
South Gambier Netball	Green Triangle, AU	Materials for shelter	\$2,500
Dartmoor Football Club	Green Triangle, AU	Season sponsorship	\$500
Penola Swim Club	Green Triangle, AU	Lane rope	\$7,000
Five Little Events	Green Triangle, AU	Mount Gambier Gift sponsorship	\$5,000
Blue Lake Golf Links	Green Triangle, AU	Club sponsorship	\$2,500
Mount Gambier Swimming Club	Green Triangle, AU	Country championships sponsorship	\$5,000
Mulga Street Primary	Green Triangle, AU	AM Safe spaces	\$7,000
St Johns Ambulance	Green Triangle, AU	Burn over kits	1,500\$
Close 2 Home Festival	Green Triangle, AU	Music festival to raise funds for mental health	\$5,000
Kalangadoo Primary School	Green Triangle, AU	Wellbeing through community connections – regulation	\$10,000
Iron Duke Sea Scouts	Top of the South, NZ	Sea kayaks x 14	\$4,900
Wakatu Riding for the disabled	Top of the South, NZ	Fencing	\$2,500
Moutere Community centre	Top of the South, NZ	Community basketball hoop	\$2,600
Wanderers Community Sports Club	Top of the South, NZ	Shirts for sports club	\$3,300
Moutere Rugby Football Club	Top of the South, NZ	Junior shorts	\$5,000
Renwick Menz Shed	Top of the South, NZ	Timber for new shed	\$4,995
Lions Club Marlborough	Top of the South, NZ	Firewood for families in need	\$2,026
Axemans Club	Top of the South, NZ	Wood for competition	\$1,227.60
FC Nelson	Top of the South, NZ	Travel costs	\$1,800
Speak it up	Top of the South, NZ	Mental health for teenagers – Nigel Latta talk	\$3,000
Rai Area School	Top of the South, NZ	Commercial ovens for welfare centre	\$7,231
Nav Pasifika Marlborough	Top of the South, NZ	Pacifika youth wellbeing project	\$1,800
Marlborough Girls College First XV Rugby team	Top of the South, NZ	Uniforms and travel costs	\$4,700
Richmond Riding for Disabled Group	Top of the South, NZ	Resurfacing pen area	\$1,558



In Australia, we operate in the Green Triangle region, an area that spans South Australia and Western Victoria.

In New Zealand, we work in the Nelson, Tasman and Marlborough regions, located at the top of the South Island.

QUALITY EDUCATION

Organisation	Region	Project	Amount
Macdonald Park Primary	Green Triangle, AU	Student leadership team building day	\$1,500
Newbery Park Primary	Green Triangle, AU	Boandik creation story mural	\$5,000
Independent Learning Centre	Green Triangle, AU	Supporting woodworking program	\$800
St Martins Lutheran College	Green Triangle, AU	VEX Robotics tournament field	\$2,500
University of South Australia	Green Triangle, AU	UniSA Science Experience	\$2,500
The Science Collective	Green Triangle, AU	Science fair	\$5,000
McDonald Park Primary School	Green Triangle, AU	Native birds education project	\$2,000
Marlborough Boys College	Top of the South, NZ	Timber to build Leatham Hut	\$5,000
Queen Charlotte College	Top of the South, NZ	Timber for community build projects	\$1,500
Tapawera School	Top of the South, NZ	Firewood for school fundraising	\$1,658
Drop for Youth	Top of the South, NZ	Fundraising to support youth and Graeme Dingle Foundation	\$2,000
Fairhall School	Top of the South, NZ	Student trip to do Tongariro Crossing	\$5,000

SUSTAINABLE CITIES & COMMUNITIES

Organisation	Region	Project	Amount
Mary Mackillop Centre	Green Triangle, AU	Native Wetland garden	\$2,500
Nangwarry Primary School	Green Triangle, AU	Community garden	\$5,000
Tenison Woods Sustainability Team	Green Triangle, AU	Bee hives project	\$2,000
Allendale East Public Hall	Green Triangle, AU	Hall renovation	\$10,000
Mil Lel Community Hall	Green Triangle, AU	Hall renovation	\$10,000
Kongorong Progress Advisory Committee	Green Triangle, AU	Safety upgrades on community bus	\$4,500
Rotary Club of Casterton	Green Triangle, AU	Information shelter refurbishment	\$4,500
Wakefield Fire Brigade	Top of the South, NZ	Five year service recognition	\$1,410
Red Cross Pacific Appeal	Top of the South, NZ	Disaster relief - employee matching	\$1,300
Victory Community Centre – Matariki	Top of the South, NZ	Matariki (Māori New Year) celebration	\$1,500
Moutere Hills RSA Memorial Library (Mapua Community Library)	Top of the South, NZ	Books for community library	\$2,000

LIFE BELOW WATER

Organisation	Region	Project	Amount
Tasman Bay Guardians	Top of the South, NZ	School education programme – experiencing marine reserves	\$5,000

LIFE ON LAND

Organisation	Region	Project	Amount
Tenison Woods College	Green Triangle, AU	Indigenous garden	\$4,450
Friends of the Great South West Walk	Green Triangle, AU	Weeding the walk	\$5,000
Moutere Birdsong	Green Triangle, AU	Traps and predator control	\$2,000
Brook Waimarama Sanctuary Trust	Top of the South, NZ	100 Hi viz vests for volunteers	\$3,151



PEOPLE

Promoting individual and community wellbeing and safety.



IDEAS

Contributing to culturally vibrant and sustainable communities.



NATURE

Rejuvenating our natural environment.



EDUCATION

Supporting education and training.

LOOKING AHEAD

We'll continue the Community Grants PINE program throughout the coming year. Our focus will be on building our impact by encouraging employees to get even more involved, reaching out to more community groups, supporting volunteering, and ensuring transparency and equity.

In 2022, most of the projects we funded were People-focused initiatives that promoted community wellbeing and safety. They were all exceptional projects, but in the coming year we'd like to provide more support to projects relating to Ideas and Nature.

We want to hear from community groups that are planning meaningful projects that will help their communities. If your group is from an area where we operate, you can apply for a grant of up to \$5,000 via the online application portal. We accept and review applications all year round.

